

Cat6 RJ-45 Plug (Close End)

Cat6 Connectors exceed Category Cat6 long lasting high performance and full support of all present and emerging applications, including 1000BASE-T (Gigabit-Ethernet). The range of products includes plugs suitable for round cables with stranded or solid conductors, 23 to 26 AWG and are tested up to 100 MHz over 100 m. These are mainly used for patch-cord termination.



SPECIFICATIONS

1. Electrical:

UI applications: 250 volts ac max. at 2 amps.
Dielectric withstanding voltage: 1000 volts ac. 60 sec.
insulation Resistance: 500 MΩ.
Contact resistance: 20mΩ MAX.
Operating ambient temperature: -40°C - 70°C.

2. Mechanical:

Strain Re life: 20pound min. durability: 1200 mating cycles.

3. Material:

Housing: polycarbonate, ul94v-0 or ul94v-2.
Color: Transparent
Contact blade: copper alloy.
Gold plating: 3u"-50u".

4. Usage:

Suitable for stranded & solid wire 24-26 AWG. (it can be used for the wire od from 0.96 -81.02)

COMPLIANCE

IEEE 802.af, IEEE 802.3at for PoE applications ANSI/TIA-568.2-D and ISO/IEC-11801 (2nd Edition), EN50173-2 Category 5e standards, IEC 60603-7-3

Cat6 RJ-45 Plug (Passthrough)

Cat6 Connectors exceed Category Cat6 long lasting high performance and full support of all present and emerging applications, including 1000BASE-T (Gigabit-Ethernet). The range of products includes plugs suitable for round cables with stranded or solid conductors, 23 to 26 AWG and are tested up to 100 MHz over 100 m. These are mainly used for patch-cord termination.



COMPLIANCE

IEEE 802.af, IEEE 802.3at for PoE applications ANSI/TIA-568.2-D and ISO/IEC-11801 (2nd Edition), EN50173-2 Category 5e standards, IEC 60603-7-3

SPECIFICATIONS

1. Electrical:

ul applications: 250 volts ac max. at 2 amps.
dielectric withstanding voltage: 1000 volts ac. 60 sec. insulation
resistance: 500 MΩ.
contact resistance: 20mΩ MAX.
operating ambient temperature: -40°C - 70°C.

2. Mechanical:

Strain Re life: 20pound min.
Durability: 1200 mating cycles.

3. Material:

Housing: polycarbonate, ul94v-0 or ul94v-2.
Color: transparent.
Contact blade: copper alloy.
Gold plating: 3u"-50u".

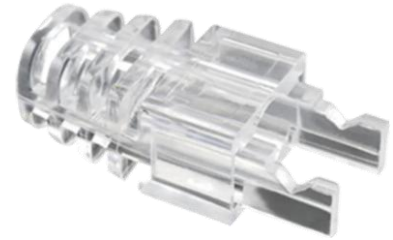
4. Usage:

Suitable for stranded & solid wire 24-26 AWG. (it can be used for the wire od from 0.96 -81.02)

Transparent RJ-45 Plug Boot

This transparent plug boot is meticulously engineered to provide an added layer of protection to your RJ45 connectors, safeguarding them against dust, moisture, and accidental damage. Compatible with a diverse array of RJ45 connectors, this boot offers a universal fit, guaranteeing versatility across various networking setups.

The Safenet RJ45 Transparent Modular Plug Boot stands as an essential addition, prolonging the lifespan and enhancing the reliability of your network connections.



Ordering Information

Part No	Name of items
36-3000WT-CE	Cat6 Unshielded 8P8C RJ-45 Plug (Close End)
36-3000WT-PT	Cat6 Unshielded 8P8C RJ-45 Plug (Passthrough)
19-3000TN	Transparent RJ-45 Plug Boot