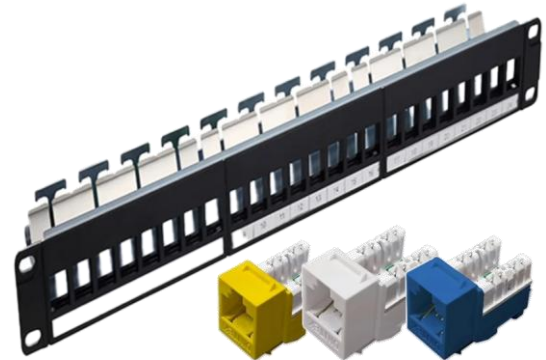


Cat6 Populated 24-Port Snap-in Panel

A patch panel is a connecting hardware system that facilitates cable termination and cabling administration using patch cords. One shorter patch cord will plug into the front side, whereas the back holds the connection of a much longer and more permanent cable.

The assembly of hardware is arranged so that a number of circuits, usually of the same of similar type, appear on jacks for monitoring, interconnecting, and testing circuits in a convenient, flexible manner.



Key Feature

- Staggered Design: Unique contact alignment reduces on alien crosstalk from each connector Compatible for 24-port applications in 1 Unit Height
- Suitable for unshielded keystone jack and coupler
- Angle patch panel (SN-UPA24): More easily to manage the patch cords of the front side
- Apply for Cat5e/Cat6/Cat6A and Cat7 type, both UTP and FTP

Technical Specification

- Patch panel Colour: Black Front with Silver Colour Support Bar
- Cabinet Designed, Label and Inlaid Marks for Convenience and Identification and Network Management Not including Module in the Packaging or with Frame
- Highly Resistance and Inflaming Not including Retarding Plastics Material
- It is Applicable for 24*RJ45 Keystone Jack
- Snap-In-Structure easy to Install and Unload Module

Ordering Information

Part No	Name of items
10-1240BK	Cat6 Populated 24-Port Snap-in Panel
SN-UPA24	cat.6 24 Port Angle Patch Panel